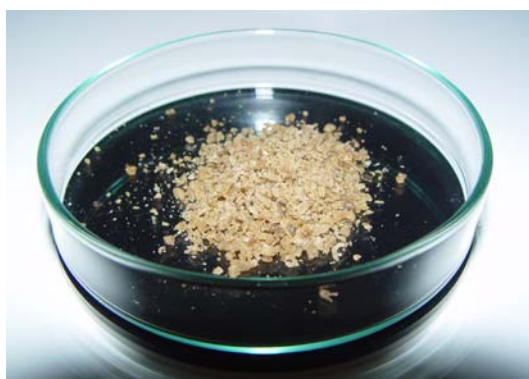


ProGlyc[®] 55



DESCRIPTION

ProGlyc[®] 55 is a feed additive that contains the glucose precursor mono propylene glycol (mpg). Mpg is very unpalatable. ProGlyc[®] 55 is produced with the Masktech technique. This technique masks the taste of mpg. ProGlyc[®] 55 is a brown palatable flake, that can be topdressed or mixed into a TMR.

SHAPE

ProGlyc[®] 55 is supplied as a brown flake

DENSITY

0.5 g/cm³

HYGROSCOPICITY

Not hygroscopic

COMPOSITION

1.2 propanediol	55%
Other ingredients	45%

DOSAGE

Dairy: 7-10 Oz./cow/day in close-up and fresh cow rations

Dairy: 200-300gr./cow/day in close-up and fresh cow rations

PACKING

55.6 lb (25 kg) bags

STORAGE

To be stored in a cool and dry surrounding.
Tenability of 24 months

*Keep out reach of children.
Not for human consumption.*